

Emma Flood: ReMix Yourself 2

Here's your chance to play art museum curator! Inspired by the MIA's Art ReMix program, we invite you to create your own ReMixes between contemporary (after 1960) and historic (before 1960) works in the MIA's collection. Art ReMix* is an exciting exhibition project that juxtaposes contemporary artworks amid the MIA's permanent collection.

Here's how to ReMix Yourself!

We provide a new contemporary work of art each week, and you ReMix it with an historic one, explain your ReMix, and then share it with the world, comment and rate other people's ReMixes, and more! There will be a new ReMix Yourself every Monday through July 26, 2010, so check back often!

For 5 easy steps on how to ReMix Yourself and info on fabulous prizes you could win, follow this link: <http://www.artsconnected.org/resource/117060/remix-yourself> (Instructions will open in a new window. You may find it easiest to print them out to refer to while ReMixingYourSelf.)

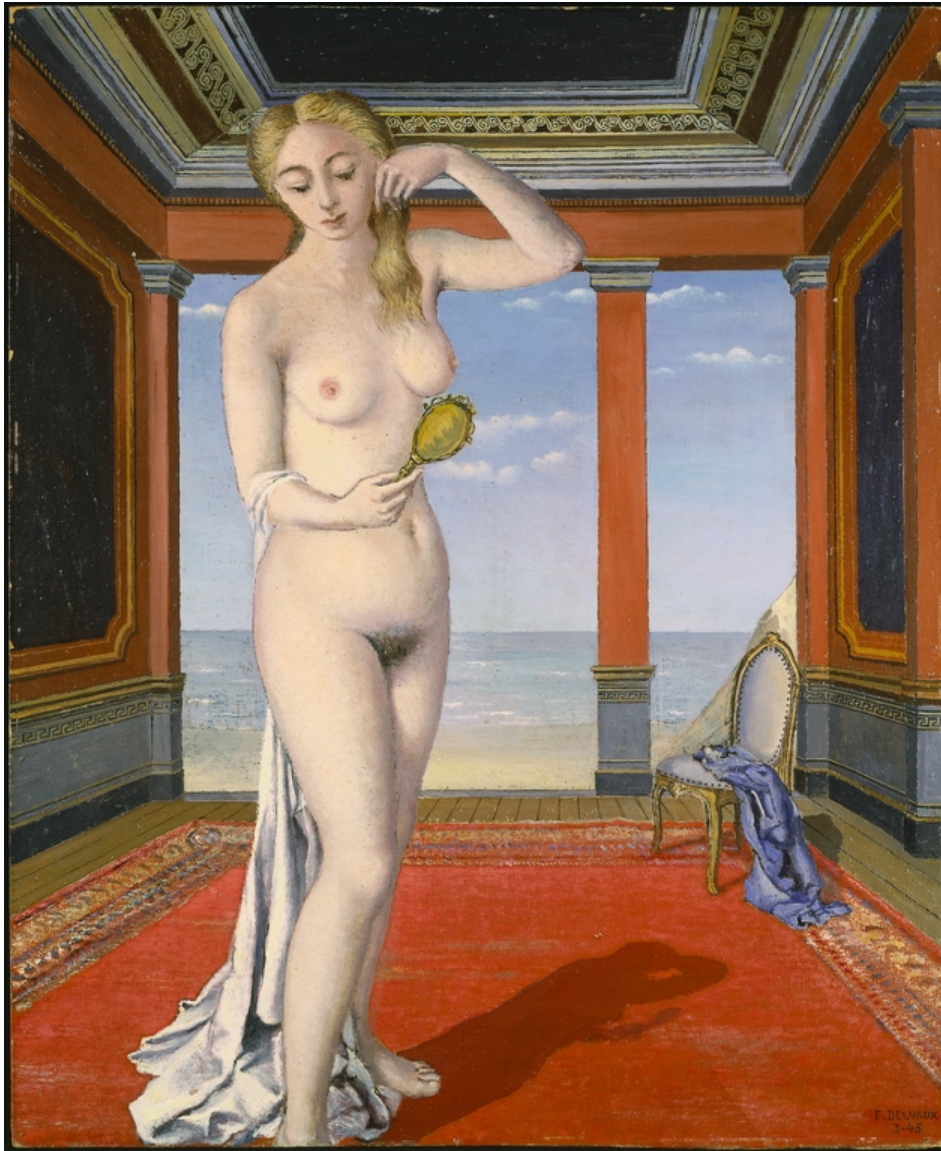
[Click here to see all the ReMix Yourself challenges and submissions so far](#) (opens in a new window). After submitting your own ReMix Yourself set(s), allow 1-3 days for publication to the site.

*Information about the Art ReMix exhibition project in the MIA permanent collection galleries can be found here: <http://www2.artsmia.org/blogs/art-remix/> (opens in a new window).

Sunburst



Artist: Dale Chihuly Date: 1999 Medium: Decorative Arts and Utilitarian Objects, Glass Size: 120 in. (304.8 cm) Institution: Minneapolis Institute of Arts Accession #: 99.132

Woman with a Mirror

This woman stands firm here, looking at her fully unclothed body with a mirror. There is a saying that she is showing the places "where the sun don't shine". So, I wanted the sun to shine on her, by putting this with the sunburst. She is her fully exposed to the viewer, and this focus is like putting a light, here the sun, on her body. The two also have a symbiotic relationship with each other. the sun to the painting highlights her exposure, and adds a radiance associated with the sun, making her more radiant and beautiful. The painting also displays a natural beauty in the lines and curves of her body that relate to the swirls and roundness of the sun piece, making her exposure less of a shock and more of an acceptable part of the Earth and nature.

Artist: Paul Delvaux

Date: 1945

Medium: Paintings, Painting

Size: 35 3/4 x 31 x 2 1/2 in. (90.81 x 78.74 x 6.35 cm)

(outer frame) 28 3/8 x 23 1/2 in. (72.07 x 59.69 cm) (canvas)

Institution: Minneapolis Institute of Arts

Accession #: 71.69