

Ashley Griffin: ReMix Yourself 1

Here's your chance to play art museum curator! Inspired by the MIA's Art ReMix program, we invite you to create your own ReMixes between contemporary (after 1960) and historic (before 1960) works in the MIA's collection. Art ReMix* is an exciting exhibition project that juxtaposes contemporary artworks amid the MIA's permanent collection.

Here's how to ReMix Yourself!

We provide a new contemporary work of art each week, and you ReMix it with an historic one, explain your ReMix, and then share it with the world, comment and rate other people's ReMixes, and more! There will be a new ReMix Yourself every Monday through July 26, 2010, so check back often!

For 5 easy steps on how to ReMix Yourself and info on fabulous prizes you could win, follow this link:
<http://www.artsconnected.org/resource/117060/remix-yourself> (Instructions will open in a new window.)

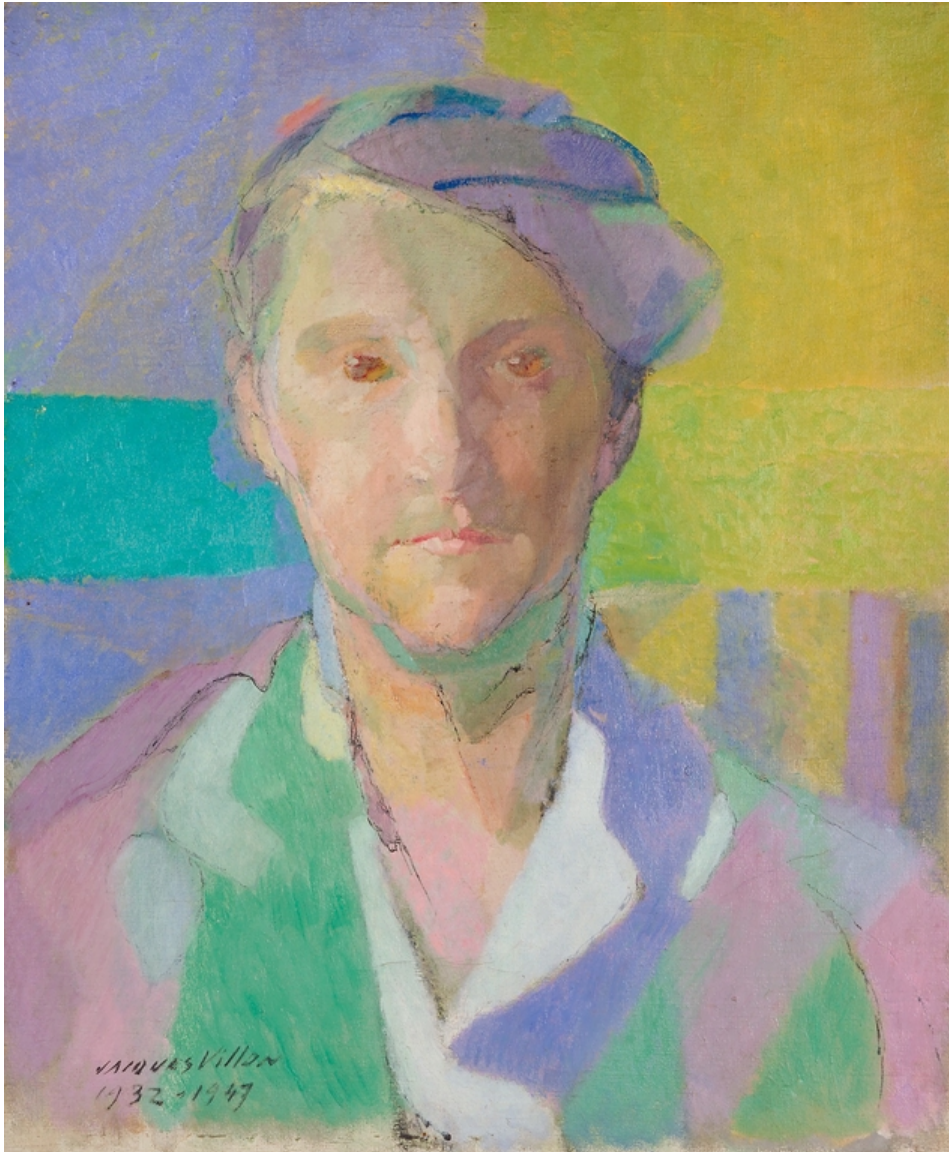
*Information about the Art ReMix exhibition project in the MIA permanent collection galleries can be found here:
<http://www2.artsmia.org/blogs/art-remix/> (opens in a new window).

Frank



Artist: Chuck Close Date: 1969 Medium: Paintings,
Painting Size: 108 x 84 x 3 in. (274.3 x 213.4 x 7.6
cm) Institution: Minneapolis Institute of Arts Accession #:
69.137

Portrait of Magda Pach



Artist: Jacques Villon

Date: 1932-1947

Medium: Paintings, Painting

Size: 21 3/4 x 18 1/4 in. (55.2 x 46.4 cm)

Institution: Minneapolis Institute of Arts

Accession #: 61.67.2

Through my search, I began thinking about the relationship between an artist and their models. Some artists begin their careers painting their friends and family because they cannot afford models, but some artists continue to portray loved ones even after their success. In these two paintings, both Villon and Close portray long-time friends. I particularly liked Villon's *Magda Pach* because the model's pose closely resembles Close's *Frank*.